



RETURN TO RACING

*Guidelines for the resumption
of National Speedway Racing
under COVID-19 restrictions
June 26, 2020*




SPEEDWAY
AUSTRALIA

Contents

3	Speedway statistics
	Our initiatives
4	Exemption request
	Venues overview
5	General COVID-19 information
7	Tier one event requirements
12	Tier two event requirements
13	Tier three event requirements
14	Resources
15	Full COVID-19 Survey
17	Venue sizes



Our Medical Assessor

Speedway Australia's Return to Racing guidelines have been thoroughly reviewed and approved by our own Medical Assessor.

Dr. Matthew MacPartlin acts as our organisation's advisor on all medical matters, including both on track and off. His qualifications include;

- Dual qualified intensivist and emergency medicine physician (FCICM, FACEM, MRCPI)
- Fellow Ad Eundem of the Faculty of Sports and Exercise Medicine, RCSI and RCPI (FFSEM)
- Motorsport physician (CAMS NMAC, WRC Rally Australia, Formula 1 Grand Prix Melbourne, Speedway Australia)
- Medical educator (Intensive Care Network and Rollcage Medic websites, SMACC, Bedside Critical Care, Jellybean Podcast)



What is Speedway?

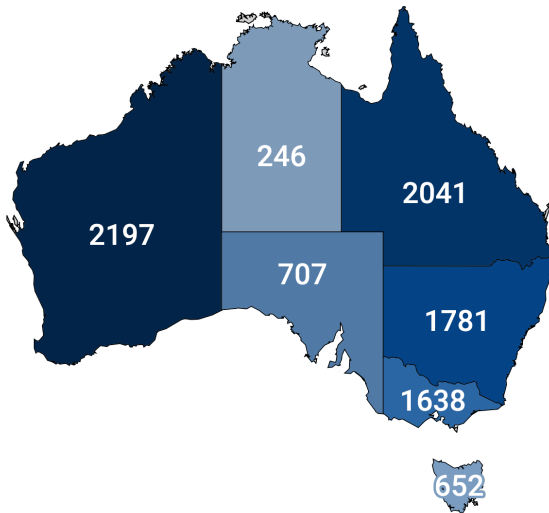
Speedway

noun

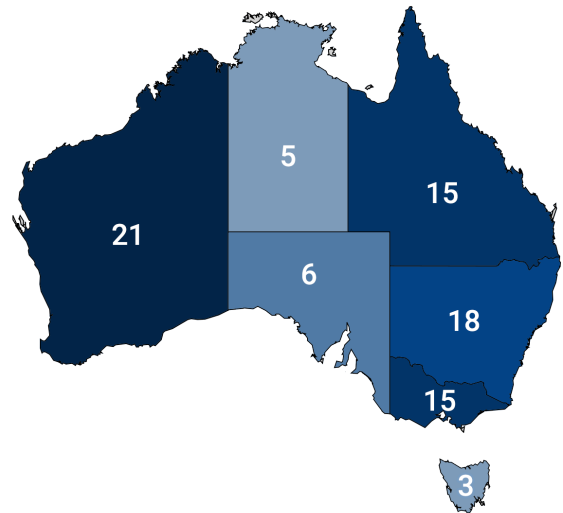
'Automobile racing on a dirt-track oval. Originating in Australia in 1923 and conducted across the globe.'

From humble beginnings in the 1920's, Australian Speedway has evolved into a powerhouse industry, with over 16,000 licence holders and 1,000 events conducted annually, across every Australian State & Territory.

Total competitors



Number of venues



Speedway is a sporting entertainment that generates a large economic footprint for its size, due to the expenditure by participants and the mobility of spectators. The average racer spends \$16,000 per annum on their vehicle, and over two-thirds of stakeholders undertake interstate travel each year to follow their sport of choice.

Speedway Australia initiatives include



Australian Awards & Hall of Fame



Youth training & development



World Series Sprintcars

Snapshot statistics

- **Growth**
- **History**
- **Tourism**
- **Economics**
- **Safety**
- **Kids**
- **Accessibility**

Speedway enjoyed 48% growth in licence holders over the period from 2010 – 2020.

Speedway was invented in Maitland, NSW in 1923 and exported around the world.

Research indicates 85% of stakeholders travel overnight to events. Over 67% travel interstate each season.

Recent studies show Speedway to be a \$2 Billion industry p/a, employing 4,000 FTE jobs.

Insurance claims have trended down over 75% in the last 23 years.

Over 750 junior competitors across Australia – up 33% over the past five years.

Young, old, male, female, able-bodied and disabled all compete together.

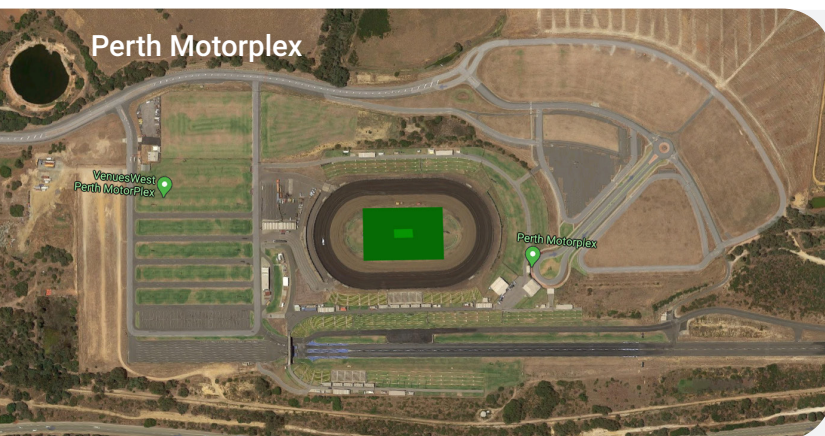
Exemption request

We have created a pathway for a return to 'full competition' showing the detailed framework, plans and guidelines that will be put in place relating directly to our proposed COVID-19 policies and procedures.

The Speedway Australia 'Return to Racing' document is a requirement for venue operators to implement. This includes practical measures to keep everyone COVIDSafe, and the use of modern technology to eliminate person-to-person contact at Speedway venues.

Venues overview

- A Speedway complex covers many hectares of real estate, with ample room for hundreds of people to social distance. By way of example, the Perth Motorplex covers 297,500 m², enough room for 74,375 people to have their allotted 4m² of space!
- Speedway is a non-contact sport, with competitors having their own vehicles and safety equipment.
- Separate competitor, volunteer and spectator areas are provided at all venues.
- Social distancing is easy to police for spectators – the vast majority of tracks have grassy banks and spacious bleachers rather than confined bucket seating.
- Spectators can park in their cars and view racing at many venues.
- Pit areas are large and competitors can social distance with ease.



Tennis Court - 192 sqm

Equivalent of 48 people at 4 sqm each.

Rugby Field - 8296 sqm

Equivalent of 2074 people at 4 sqm each.

Average Speedway venue - 22,291 sqm

Equivalent of 5,572 people at 4 sqm each.

Highlights

- **Regulation** All venues must implement the Speedway Australia 'Return to Racing' guidelines.
- **Approval** Our Medical Assessor Dr. Matthew MacPartlin has reviewed and approved the plan.
- **COVIDSafe** We strongly recommend the use of the COVIDSafe App.
- **Spectators** Spectators can park in their cars and watch, or social distance on grassed viewing areas.
- **Social distancing** Competitors and Officials do not get close to one another.
- **Hands off** Venue entry and credential checks are now contactless.
- **Stop the spread** Appropriate safety measures are in place as required by State authorities.

Return to racing post COVID-19

A return to racing for speedway competitors is approaching – whether organised practices or competition – and clear guidelines are required. There will be constant change as COVID-19 restrictions begin to ease.

Speedway Australia has developed a COVID-19 Track Safety Plan for venue operators, to assist them with running their events. This plan has been reviewed and endorsed by our Medical Assessor, an Emergency & Intensive Care Specialist at Wollongong Hospital.

General COVID information

Transmission

COVID-19 is highly transmissible from person-to-person and readily spreads to close contacts of infected individuals. The disease can spread from person to person through small droplets from the nose or mouth which are spread when a person with COVID-19 coughs or exhales. These droplets land on objects and surfaces around the person. Other people then catch COVID-19 by touching these objects or surfaces (fomites), then touching their eyes, nose, or mouth. People can also catch COVID-19 if they breathe in droplets from a person with COVID-19. The virus can persist in the air for up to three hours and on a variety of surfaces for up to 72 hours.

Prevention

Pre-emptive low-cost interventions such as enhanced hygiene and social distancing measures reduce numbers of cases through several mechanisms. Social distancing decreases the risk of transmission by reducing incidence of contact while enhanced hygiene reduces disease transmission if a contact occurs. Education of the public and enhanced medical resources have also been shown to reduce transmission.

Preparation for speedway racing resumption

Prior to the resumption of speedway racing, it is important for tracks to safely prepare their environments. A thorough risk assessment must be carried out and preparation will be specific to the relevant track. A resumption of speedway racing should not occur until appropriate measures are implemented to ensure safety of competitors, officials, and spectators.

For more information please visit: www.speedwayaustralia.org/covid-19

Education

Education of competitors, officials and spectators about COVID-19 risk mitigation strategies is crucial.

Possible education measures include:

- Good hygiene for COVID19 (e.g. regular and thorough handwashing)
- Keep cough covered (covering mouth/ nose with a tissue or sleeve during coughing/sneezing)
- Self-isolation
- Advice for people at risk
- No sharing of drink bottles
- No sharing of equipment without an appropriate cleaning protocol
- Display appropriate education material within speedway facilities
- Recommend community sport members download the Australian Government COVID-19 contact tracing app (COVIDSafe)





Vulnerable groups

Vulnerable groups such as the elderly and others with medical conditions may be at increased risk. Those with associated medical conditions need individualised management in consultation with their regular treating doctor(s) prior to return to racing environments.

Considerations include increased susceptibility to respiratory infections, unique equipment (e.g. wheelchairs) that requires cleaning, accessibility of medical resources, risk of underlying medical condition. Competitors, officials and other personnel with concurrent medical conditions including; respiratory or cardiac disease, hypertension, diabetes, obesity and immunosuppression due to disease or medication may be at increased risk. Other groups that require special consideration include individuals over 70 years of age, carers for or a household contact of a vulnerable person, speedway personnel with suboptimal access to medical care (e.g. remote) and Aboriginal and Torres Strait Islander Communities.

Potential interventions for vulnerable speedway personnel include:

- Delaying a return to sport
- Practice scheduled at designated 'lower risk' times (i.e. with no one else around)
- Staff working off-site where possible
- Maintaining social distancing measures
- Exclusion of 'high risk' personnel from the speedway environment.
- Display appropriate education material within speedway facilities
- Recommend community sport members download the Australian Government COVID-19 contact tracing app (COVIDSafe)

Proposed criteria for resumption of sporting activity

Initial resumption of speedway racing will be governed by public health policy and Federal, State/Territory Government directives. It is worth noting that different States/Territories may permit the resumption of some sporting activities at different times, dependent on local COVID-19 transmission, resources and other variables influencing local policy. Even within a State/Territory there could be geographical variability.

Three levels (Levels A, B, C) of speedway activities are recommended in the context of a COVID-19 environment. For each level, all speedway tracks must ensure that the activities undertaken in practice and competition are consistent with the applicable guidance from Local Public Health Authorities.

Definition of proposed speedway activities:

- Level A – Practice event with no spectators
- Level B – Club event with spectator limits inline with the relevant state
- Level C – National Title with spectators

Recommendations

The impact of coronavirus will undoubtedly have a long-lasting and significant impact on speedway event planning and operations. The following recommendations are designed to provide a scalable application to all sizes and forms of speedway events. Race organisers are ultimately responsible for the safety and well-being of their event participants and should exercise discretion for how they implement these recommendations at their own events.



Practice Event - Cullen Bullen Speedway, NSW

Before holding an event:

- Adhere to the mass gathering limitations set by local authorities
- Complete Speedway Australia Covid-19 online course
- Have plans in place for preventing, mitigating, responding to disease transmission
- Competitors and officials must pre-monitor their health status continuously for 14 days before the event (including monitoring symptoms and taking temperature). A Speedway Australia online waiver form is to be completed confirming their full health.
- Under no circumstances should anyone with symptoms consistent with COVID-19 attend the event. This includes any fever, respiratory symptoms, shortness of breath, sore throat, cough, fatigue, or lack of sense of smell.
- Under no circumstances should anyone attend the event if they have been;
 - i. overseas in the previous 14 days; or
 - ii. in contact with someone who has been overseas in the previous 14 days; or
 - iii. in contact with a known COVID-19 positive case in the previous 14 days.
- For more information please go to www.speedwayaustralia.org/covid-19

Government Guidelines

- New South Wales and Local Public Health Authority Guidelines must always be followed. If state government guidelines differ from the information in this document then the state governments guidelines override this,
- Speedway Australia has strongly encouraged the use of the Australian Government's 'COVIDSafe App' for all event participants
- Speedway Australia tracks must follow the travel restrictions in place for New South Wales.
- Venue operators can access links to the venue and travel restrictions at click the state map below.



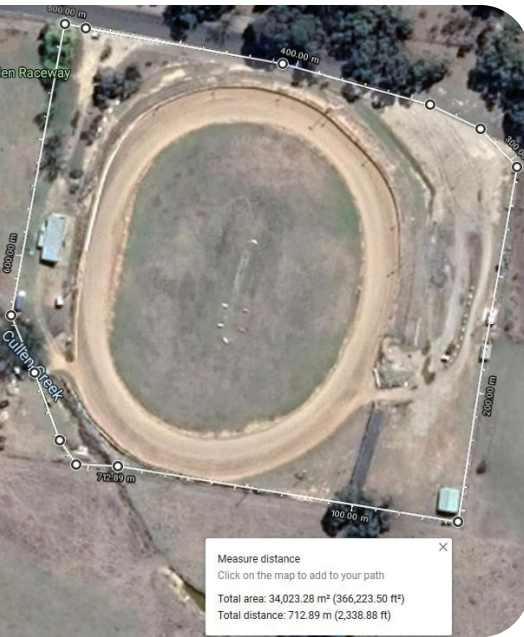
Participant social distancing for Speedway venues

The left picture below demonstrates how social distancing can occur. The marked areas are a 4m² area (for one person) and a 40m² area that other venues can have up to 10 persons in. On the right is the size of the pit area, with the same person in the distance for comparison.

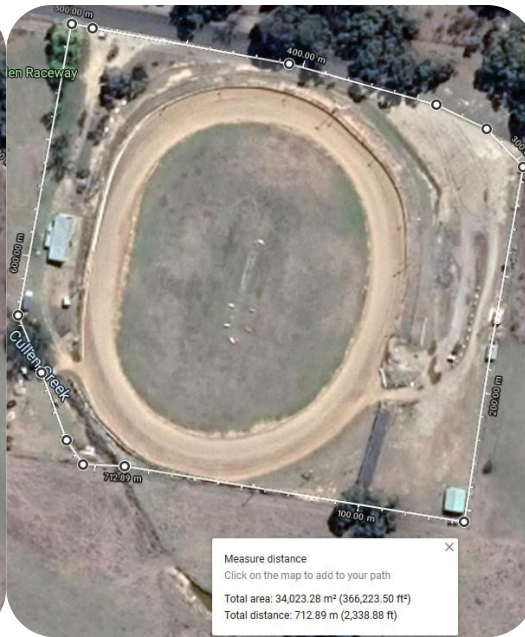


Cullen Bullen Speedway Aerial Imaging

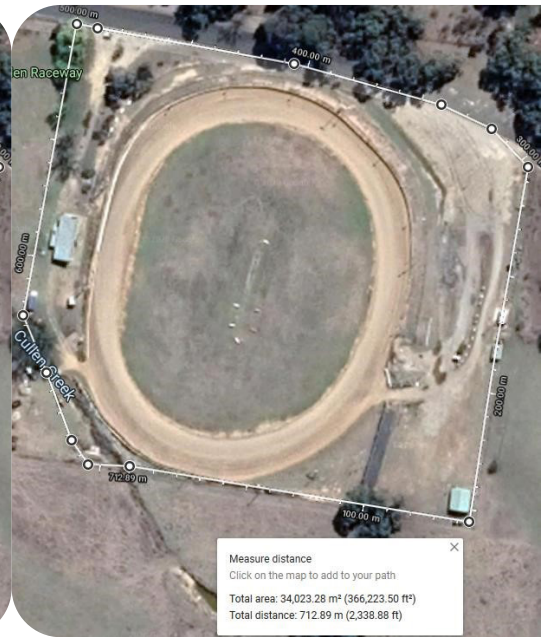
Below are images of land sizes at Cullen Bullen Speedway:



Total land area = 34,023m² (8.4 acres)



Pit area = 7,361m²



Spectator area = 6,380m²

COVID-19 Track Safety Plan

It is a requirement that venue operators complete the COVID-19 Track Safety Plan prior to obtaining an event permit. (this is only required once). This plan is to show how your staff/volunteers and patrons will be kept safe during the COVID-19 pandemic.

Venue operators will be required to provide detailed information as to how their Speedway event will meet guidelines set out by Federal, State and Local government in relation to the following:

- Physical & Social distancing
- Hygiene practices
- Staff/Volunteer training & education
- Compliance
- Response planning

Venue operators can access the Speedway Australia COVID-19 Track Safety Plan and Covid-19 information centre at www.speedwayaustralia.org/covid-19

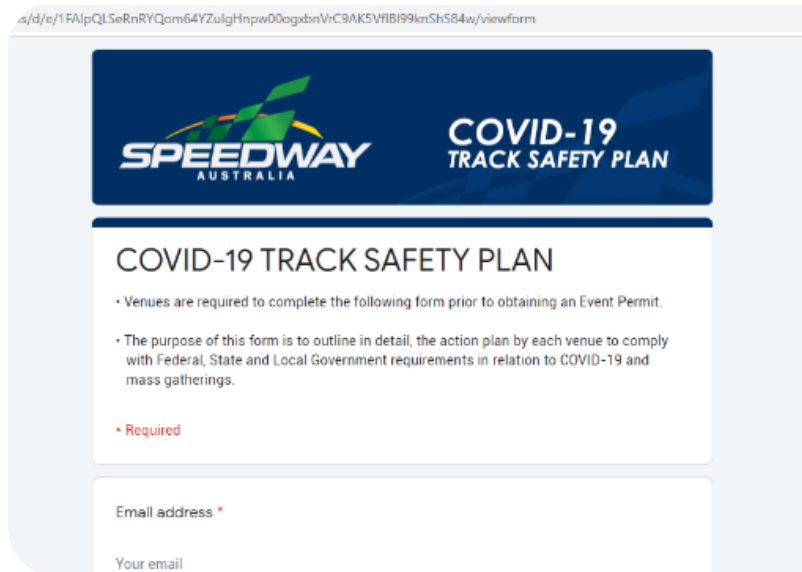
Event Operations



The following provides guidance for event organisers holding events. Event organisers may need to comply with state based, local or facility-based regulations.

(a) *Sanitisation Protocols Basic infection prevention measures must be implemented to protect all persons at your event. This includes but is not limited to:*

- At the venue display signage encouraging regular hand washing and sanitising
- Create enough hand washing and sanitising areas
- First Aid stations





- Portable toilets
- Food and Beverage outlets
- Extra trash bins placed around event venue
- Regular cleaning of high touch areas
- Advise competitors, officials to stay home if they are feeling unwell
- Discourage use of other people's equipment, phones, tools, etc.
- Extra portable toilets
- Provide sanitation options (hand wipes, sinks, sanitisers) outside portable toilets
- Adding space between portable toilets to encourage social distancing
- Have volunteers available to monitor and restock supplies continuously

(b) *Venue Setup and Flow Promote physical distancing and mitigate person-to-person contact*

- Venue to provide signage placed in key areas of venue encouraging physical distancing
- Add markings to the ground around potentially crowded areas
- Design venue in a way that allows for smooth flow and mitigates crowds
- Spectators are not allowed for practice events
- Entry and exit points should be made as wide as possible
- Have the race announcer make announcements periodically to remind spectators about guidelines and government regulations.



(c) *Event Medical and Safety Operations*

Gloves only protect the person wearing the gloves. Dirty gloves can transmit disease in the same fashion as dirty hands without gloves. Gloves should only be worn in key areas of food/fluid preparation, proximity to participants or other areas as necessary where transmission of disease or dirty substances is high.

- Request medical to be equipped to support patients with respiratory symptoms
- Have medical staff equipped with thermometers, extra masks and gloves
- Staff members should be dedicated on constantly cleaning tables, chairs and other high touch areas. An additional consideration could be disposable covers on each of these items
- Supply enough hand sanitiser, fresh towels and wipes, trash cans and other cleaning products
- Tracks are encouraged to screen everyone that enters the venue



(d) *Registration and race day procedures*

These procedures should be altered to promote physical distancing and mitigate person-to-person contact.

- Registration process is all completed online
- Competitors are notified to arrive at staggered times to the venue
- Race receivers, tools and radios must be disinfected
- Race briefings can be held via the track P.A system and competitors to adhere to social distancing requirements.

Race Operations

- Drivers and officials to adhere to social distancing and avoid gatherings outside of their designated pit area
- Drivers to remain in car until they are in the allocated pit area
- Post signage around the pit areas to encourage physical distancing



- Practice events are spectator free
- Stewards to communicate to drivers via radio or in person with social distancing if a protest is required
- Awards and award ceremonies may go ahead with social distancing restrictions
- Photographers and media to social distance around the podiums and during interviews
- Avoid physical contact including but not limited to high fives, hugs, and handshakes
- Brief all media about physical distancing and movement around the venue

Food & beverage outlets



- Vendors to complete COVID training courses www.covid-19training.gov.au
- Display social distancing and hygiene signage around outlets
- Floor markings to be displayed in high traffic areas
- Cashless payments preferred wherever possible

Staff & volunteers at events



- Remind competitors and officials that official communications about the event is only to come from the race director or other appointed person in charge of media communications. Avoid speculations on event changes, competitor or staff illnesses or injuries, or other variables surrounding the pandemic and its effect on the event
- Staff/ volunteers not feeling well must not attend the event
- Staff/ volunteers must be sent home if they arrive and are unwell
- Reduce staff and volunteers where possible but increase in key areas, as necessary
- Supply sufficient amount of hand sanitiser, masks, gloves, water and sunscreen
- Provide at least 2 face masks & 2 pairs of gloves per staff member, including officials
- Have temperature checks available
- Encourage staff and volunteers to complete 'Infection Control Training - COVID 19' provided online by the Australian Government – www.covid-19training.gov.au

General hygiene

Speedway Australia has previously communicated to clubs that their staff and volunteers should exhibit a heightened awareness of personal hygiene as has been encouraged by state and federal health departments and they should display a heightened regard for the sanitation of surfaces, of which their cleaning chemical provider will be able to provide guidance on.

Speedway Australia has provided Club & Facilities with specific easy to implement changes to regular operations to reduce the risk of transmission of COVID-19.

These include:

a. Entry to the venue will comprise of a contactless temperature check, if deemed necessary. Payments are cashless with EFTPOS machine for entry fees only and paperless insurance sign on/waiver sheets.

b. Hand Hygiene facilities or sanitiser stations must be available to all event attendees at the event entry, food and beverage outlets and other areas the facility.



- c. Avoid sharing equipment, tools, or apparel.
- d. Minimise shared food or group catering services.
- e. Appropriate Personal Protective Equipment (PPE) to be worn by rescue, recovery and medical personnel at the event.
- f. Frequently touched surfaces, work areas and equipment are cleaned thoroughly.

Social Distancing

- a. Maintain social distancing measures in the spectator, pit and officials' areas (incl capacity limits based on 4m² per person)
- b. Avoid the use of indoor facilities where possible.
- c. No mass gatherings including drivers and officials' briefings, officials sign on gatherings, media conferences. Drivers briefings can be conducted over the tracks PA system with competitors listening to and acknowledging the briefing in their allocated pit area.
- d. Limit the number of personnel attending an event to those who are essential. This includes placing restrictions on the number of spectators, competitors, officials, and support personnel that are granted access to the event, in accordance with Government regulations.
- e. Avoid unnecessary physical interaction between officials, competitors, media and other personnel. Wherever possible electronic and radio interaction should be used.



Monitoring during the event

- a. A COVID-19 Checker will be appointed to each event by the Event Organiser whose sole responsibility is to ensure compliance with Government and Speedway Australia requirements.
- b. In addition to recommending each event attendee to download the COVIDSafe App, each organiser is required to maintain a complete register of event attendees and their contact details. This register, preferably electronic, must be submitted to Speedway Australia upon request.
- c. As per health guidelines Speedway Australia continues to recommend to clubs/facilities to advise their members and guests if they are experiencing any cold, flu, or fever type symptoms they must not visit the speedway facility. Additionally, we recommend that these persons should seek to get tested for COVID-19 as soon as possible.

Public safety & security

Should determine who is allowed at the event or in specific designated areas. Adhere to the mass gathering limitations set by local authorities.

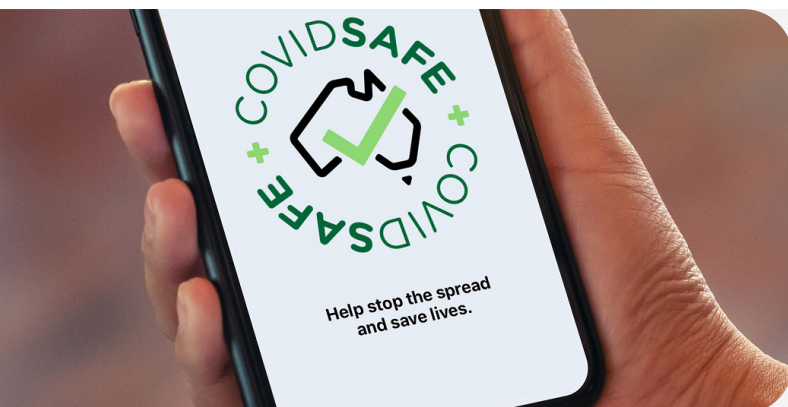
- No spectators to attend practice meetings
- Use multiple communication strategies to encourage vulnerable groups not to attend the event
- Create lines of communications between medical team, event organiser, event personnel, competitors, and officials
- Ensure personnel understand that speedway personnel who become unwell should be immediately isolated and given a clean disposable facemask to wear
- Identify access routes for medical personnel for ill patient removal
- Identify an area for someone with symptoms and provide a mask if available
- Consider screening temperature for everyone attending if practical
- Use different entrance/ exit for spectators and participants

Club event - Murray Bridge Speedway, SA

Government guidelines

Tier two guidelines are in addition to Tier One.

- South Australian and Local Public Health Authority Guidelines must always be followed. If state government guidelines differ from the information in this document then the state governments guidelines override this,
- Speedway Australia has strongly encouraged the use of the Australian Government's 'COVIDSafe App' for all event participants
- Speedway Australia tracks must follow the travel restrictions in place for South Australia.
- Venue operators can access links to the venue and travel restrictions at click the state map below.

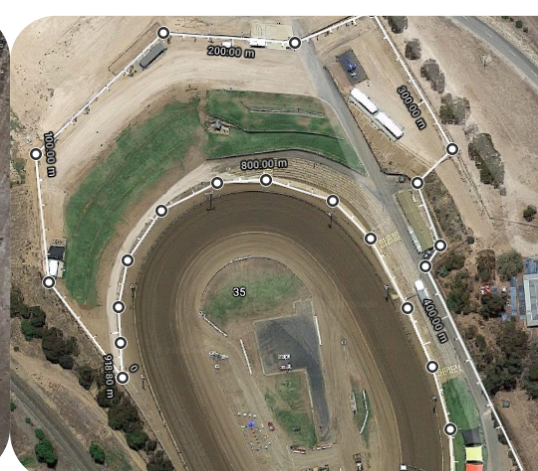
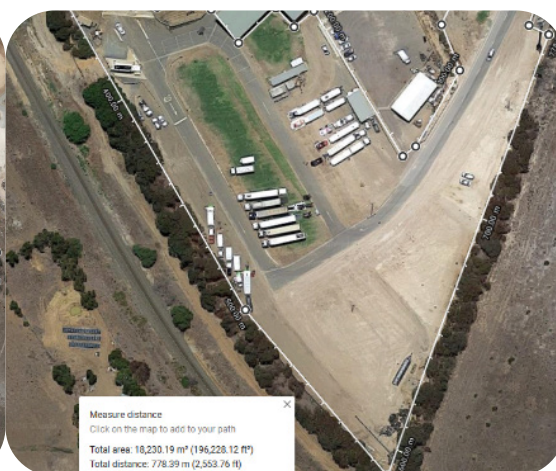


Public safety & security

Should determine who is allowed at the event or in specific designated areas. Adhere to the mass gathering limitations set by local authorities.

- Limited spectators may attend club meetings
- Use multiple communication strategies to encourage vulnerable groups not to attend the event
- Create lines of communications between medical team, event organiser, event personnel, competitors, and officials
- Ensure personnel understand that speedway personnel who become unwell should be immediately isolated and given a clean disposable facemask to wear
- Identify access routes for medical personnel for ill patient removal
- Identify an area for someone with symptoms and provide a mask if available
- Consider screening temperature for everyone attending if practical
- Use different entrance/ exit for spectators and participants

Murray Bridge Speedway Aerial Imaging



Total land area = 94,230 m² (23.2 acres)

Pit area = 18,230 m²

Spectator area = 14,908 m²

National event - Ellenbrook Speedway, WA

Government guidelines

Tier three guidelines are in addition to Tier One.

- Western Australian and Local Public Health Authority Guidelines must always be followed. If state government guidelines differ from the information in this document then the state governments guidelines override this,
- Speedway Australia has strongly encouraged the use of the Australian Government’s ‘COVIDSafe App’ for all event participants
- Speedway Australia tracks must follow the travel restrictions in place for Western Australia.
- Venue operators can access links to the venue and travel restrictions at click the state map below.



Public safety & security

Should determine who is allowed at the event or in specific designated areas. Adhere to the mass gathering limitations set by local authorities.

- Spectators can attend national events
- Use multiple communication strategies to encourage vulnerable groups not to attend the event
- Create lines of communications between medical team, event organiser, event personnel, competitors, and officials
- Ensure personnel understand that speedway personnel who become unwell should be immediately isolated and given a clean disposable facemask to wear
- Identify access routes for medical personnel for ill patient removal
- Identify an area for someone with symptoms and provide a mask if available
- Consider screening temperature for everyone attending if practical
- Use different entrance/ exit for spectators and participants

Ellenbrook Speedway Aerial Imaging



Total land area = 92,870m² (22.95 acres)

Pit area = 6,308m²

Spectator area = 22,016m²



Resources

1. AIS – [The Australian Institute of Sport framework for rebooting sport in a COVID-19 environment](#)
2. AUS GOVERNMENT - [How to protect yourself and others from coronavirus \(COVID-19\)](#)
3. WHO – [Q&A on Mass Gatherings and COVID-19](#)
4. WHO - [Generic Risk Assessment and Mitigation Checklist](#)
5. SPORT AUSTRALIA - [“Return to Sport” toolkit](#)

These Guidelines have been prepared by Speedway Australia. This document is current from 21 June 2020 and will be updated regularly during this transition phase.

COVID-19 Full Survey

Here is the full version of the COVID-19 Track Safety Plan survey.



COVID-19 TRACK SAFETY PLAN

- All venues are required to complete the following form prior to obtaining an Event Permit, unless it is a mandatory requirement to complete a state/territory Government COVID-19 safety plan such as in South Australia, Northern Territory or Western Australia.
- The purpose of this form is to outline in detail, the action plan by each venue to comply with Federal, State and Local Government requirements in relation to COVID-19 and mass gatherings.

* Required

Email address *

Your email _____

Name of Premises: *

Your answer _____

In hosting a Speedway Australia permitted event, we the venue operator(s) agree to the following: Please tick the appropriate boxes below *

- Gatherings of people are to be no more than what is permissible in your relative state
- Hand hygiene facilities will be provided and clearly indicated
- There will be minimal shared equipment amongst competitors and officials
- High-traffic areas will be frequently cleaned and disinfected
- Any communal shower or change room areas will be closed
- A record of all patrons will be kept, to assist with contact tracing if required
- The venue will comply with any additional Federal, State or Local government requirements


Completed by: *

Your answer _____

Position: *

Your answer _____

Date: *

Date
dd/mm/yyyy 

COVID-19 Full Survey

Here is the full version of the COVID-19 Track Safety Plan survey.

SECTION 2 - PREVENTATIVE MEASURES

Please complete the form below and submit along with any additional information as required.

2.1 Physical and social distancing

Consider: physical distancing for staff and patrons; occupancy limits based on 4sqm requirements; management of communal areas etc

What will be done to implement physical distancing guidelines?

Your answer

2.2 Hygiene

Consider: hygiene protocols and practices; supply of cleaning and sanitiser products etc

How will you ensure required hygiene standards are maintained? *

Your answer

2.3 Staff/Volunteer Training and Education

Consider: Speedway Australia Covid-19 training course, additional education, additional signage, guidance material etc

How will you ensure all your staff and volunteers know how to keep themselves and others safe from exposure to COVID-19? *

Your answer

2.4 Compliance

I am aware that in addition to the legal obligations arising from the Emergency Management Act 2005 and the Directions made under that Act, I must continue to comply with relevant existing legislation and regulations, including WorkSafe legislation. *

Yes

No

2.5 Response Planning

How will you respond to an exposure or suspected exposure to Covid-19 within your premises? Consider: records of patrons, cleaning procedures, referrals to relevant authorities, regular review of procedures etc *

Your answer

Venues sizes by state

SOUTH AUSTRALIA	Spectator area m2	Capacity 4m2	Capacity 2m2	Pit area m2	Capacity 4m2	Capacity 2m2
Bordertown	5,493	1373	2747	19,215	4804	9608
Gillman	6,517	1629	3259	2,890	723	1445
Mt. Gambier	8,950	2238	4475	17,999	4500	9000
Murray Bridge	14,908	3727	7454	18,230	4558	9115
Renmark	5,112	1278	2556	20,831	5208	10416
Waikerie	13,178	3295	6589	18,775	4694	9388
Whyalla	8,403	2101	4202	11,731	2933	5866

WESTERN AUSTRALIA	Spectator area m2	Capacity 4m2	Capacity 2m2	Pit area m2	Capacity 4m2	Capacity 2m2
Albany	8,428	2107	4214	11,261	2815	5631
Broome	8,685	2171	4343	7,530	1883	3765
Bunbury	11,791	2948	5896	13,957	3489	6979
Carnarvon	10,605	2651	5303	14,796	3699	7398
Collie	5,586	1397	2793	14,164	3541	7082
Derby	7,650	1913	3825	15,845	3961	7923
Ellenbrook	22,016	5504	11008	16,308	4077	8154
Esperance	7,726	1932	3863	13,667	3417	6834
Geraldton	6,655	1664	3328	15,759	3940	7880
Newman	11,709	2927	5855	8,843	2211	4422
Kalgoorlie	10,953	2738	5477	7,482	1871	3741
Kununurra	9,437	2359	4719	11,212	2803	5606
Manjimup	7,193	1798	3597	17,170	4293	8585
Margaret River	9,098	2275	4549	11,315	2829	5658
Moora	8,151	2038	4076	16,920	4230	8460
Mt. Barker	4,247	1062	2124	9,053	2263	4527
Narrogin	10,091	2523	5046	11,979	2995	5990
Nickol Bay	11,017	2754	5509	13,089	3272	6545
Perth	16,616	4154	8308	48,391	12098	24196
Pinjar Park	2,166	542	1083	4,917	1229	2459
Port Hedland	17,494	4374	8747	10,738	2685	5369
Shark Bay	4,902	1226	2451	11,950	2988	5975

TASMANIA	Spectator area m2	Capacity 4m2	Capacity 2m2	Pit area m2	Capacity 4m2	Capacity 2m2
Carrick	5,348	1337	2674	17,678	4420	8839
Hobart	8,830	2208	4415	12,687	3172	6344
Latrobe	9,248	2312	4624	15,041	3760	7521

Venues sizes by state

VICTORIA	Spectator area m2	Capacity 4m2	Capacity 2m2	Pit area m2	Capacity 4m2	Capacity 2m2
Avalon	7,239	1810	3620	19,083	4771	9542
Drouin	4,555	1139	2278	7,476	1869	3738
Hamilton	5,095	1274	2548	13,282	3321	6641
Horsham	5,198	1300	2599	25,594	6399	12797
Laang	2339	585	1170	12,557	3139	6279
Mildura	6,172	1543	3086	26,642	6661	13321
Mortlake	2,464	616	1232	21,773	5443	10887
Myrtleford	2,341	585	1171	6,631	1658	3316
Nagambie	6,325	1581	3163	11,300	2825	5650
Nyora	4,903	1226	2452	9,328	2332	4664
Olympic Park	3,009	752	1505	10,035	2509	5018
Portland	2,991	748	1496	16,287	4072	8144
Rushworth	10,190	2548	5095	15,917	3979	7959
Simpson	3,276	819	1638	17,219	4305	8610
Swan Hill	8,663	2166	4332	24,498	6125	12249
Wahgunyah	5,033	1258	2517	18,546	4637	9273
Wangaratta	5,554	1389	2777	8,543	2136	4272
Warrnambool	8,711	2178	4356	15,936	3984	7968

NEW SOUTH WALES	Spectator area m2	Capacity 4m2	Capacity 2m2	Pit area m2	Capacity 4m2	Capacity 2m2
Bega	14,775	3694	7388	14,155	3539	7078
Broken Hill	6,064	1516	3032	14,603	3651	7302
Cullen Bullen	6,380	1595	3190	7,360	1840	3680
Dubbo	12,461	3115	6231	21,778	5445	10889
Gilgandra	7,179	1795	3590	18,317	4579	9159
Goulburn	6,891	1723	3446	15,127	3782	7564
Grafton	6,230	1558	3115	15,974	3994	7987
Gunnedah	10,469	2617	5235	15,696	3924	7848
Illabo	1237	309	619	6,642	1661	3321
Kurri Kurri	8,078	2020	4039	12,287	3072	6144
Leeton	5,728	1432	2864	11,298	2825	5649
Lismore	8,051	2013	4026	16,943	4236	8472
Moama	14,233	3558	7117	25,302	6326	12651
Moruya	1,392	348	696	11,906	2977	5953
Narrabri	6,954	1739	3477	12,962	3241	6481
Nowra	15,905	3976	7953	13,043	3261	6522
Sydney	10,429	2607	5215	20,370	5093	10185
Tamworth	10,524	2631	5262	8,443	2111	4222

Venues sizes by state

NORTHERN TERRITORY	Spectator area m2	Capacity 4m2	Capacity 2m2	Pit area m2	Capacity 4m2	Capacity 2m2
Alice Springs	7,688	1922	3844	13202	3301	6601
Darwin	10,760	2690	5380	19,211	4803	9606
Katherine	8,193	2048	4097	15,394	3849	7697
Nhulunbuy	8,439	2110	4220	11,566	2892	5783
Tennant Creek	4,305	1076	2153	12,932	3233	6466

QUEENSLAND	Spectator area m2	Capacity 4m2	Capacity 2m2	Pit area m2	Capacity 4m2	Capacity 2m2
Archerfield	7,736	1934	3868	10,587	2647	5294
Blackwater	4,496	1124	2248	10,038	2510	5019
Bowen	8,027	2007	4014	5,752	1438	2876
Brandon, Ayr	5,144	1286	2572	5,593	1398	2797
Cairns	6,588	1647	3294	10,106	2527	5053
Gatton	12,486	3122	6243	22,185	5546	11093
Gympie	8,935	2234	4468	11,887	2972	5944
Kingaroy	9,853	2463	4927	24,993	6248	12497
Mareeba	5,320	1330	2660	11,569	2892	5785
Maryborough	6211	1553	3106	14,374	3594	7187
Mick Doohan	9,623	2406	4812	5535	1384	2768
Moranbah	10,767	2692	5384	15,902	3976	7951
Pioneer Park	7,351	1838	3676	5,166	1292	2583
Rockhampton	6,547	1637	3274	18,312	4578	9156
Roma	5,382	1346	2691	5,397	1349	2699
Toowoomba	6,091	1523	3046	19,256	4814	9628